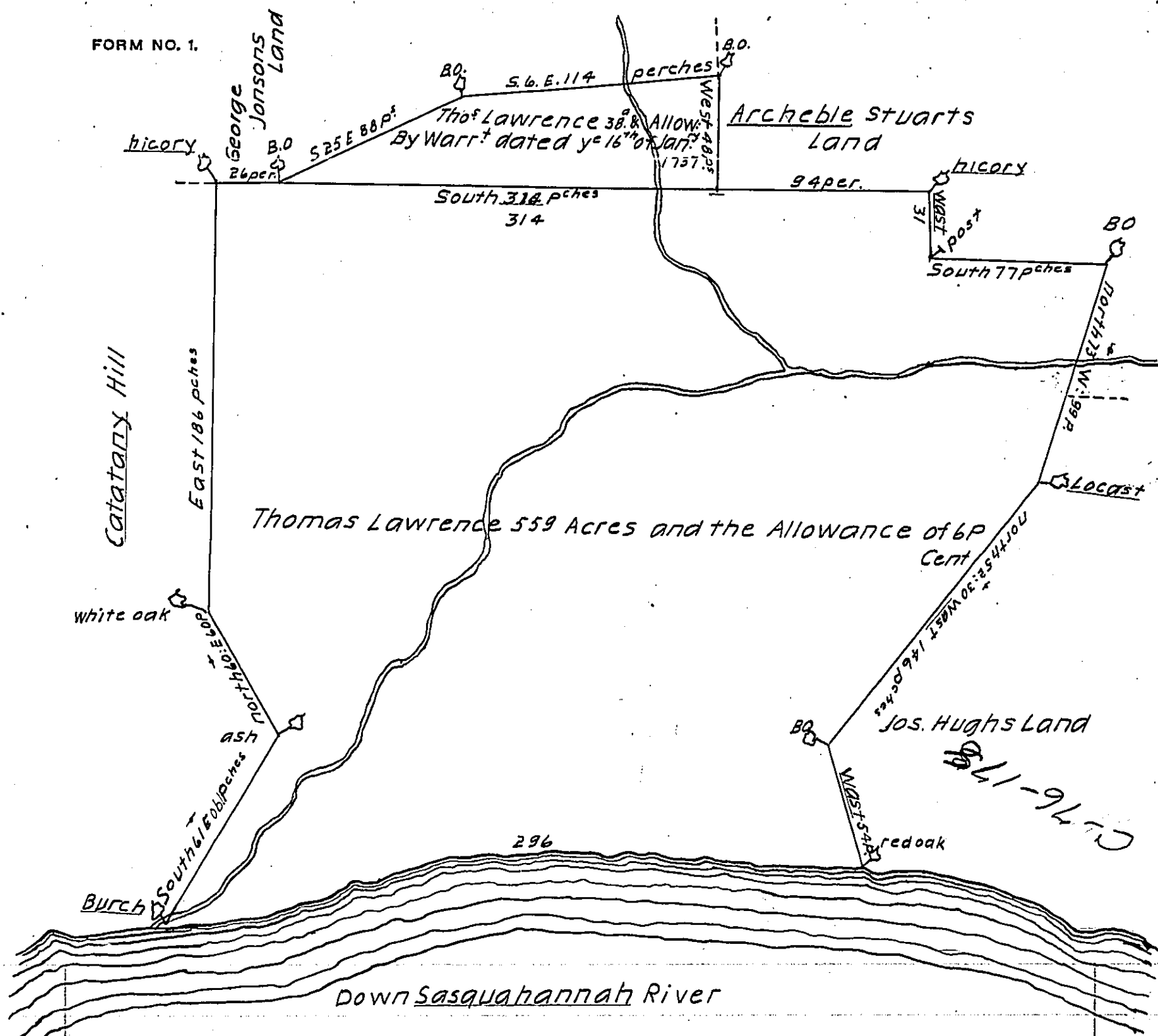


FORM NO. 1.



By Virtue of a Warrant from the Proprietaries dated the 24 day of September Anno Dom. 1736 Surveyed on the 4<sup>th</sup> day of January Anno Dom 1737 To Thomas Lawrence of the City of Philadelphia Merchant A Tract of Land Situate in the Township of Pastong in the County of Lancaster Begining at a red oak Standing by the River Sasquahannah thence along up the said River by it's Several Cources 296 Pches to a Beech tree Thence South Sixty one <sup>Degrees</sup> Easterly 96 Pches Thence North Sixty Degrees Easterly 60 Pches Thence East 186 Pches to a hickory Thence South 314 Pches to hickory Thence West 31 Pches to A Post Thence South 77 Pches to Black Oak Thence North Seventy three Degrees Westerly 99 Pches to a Locast Thence north fifty two Degrees and half wasterly 146 Pches to a black oak Thence west 54 Pches to the place of begining Containg five hundred & fifty Nine Acres and the Allowance of Six Acres P Cent for Roads & Highways.

Surveyed P<sup>d</sup> Ed<sup>m</sup> Smout

IN TESTIMONY that the above is a copy of the original remaining on file in the Department of Internal Affairs of Pennsylvania, made conformably to an Act of Assembly approved the 16th day of February, 1833, I have hereunto set my Hand and caused the Seal of said Department to be affixed at Harrisburg, this seventeenth day of January, 19/2.

*Nancy Howell*  
Secretary of Internal Affairs.